

Medical University of South Carolina
Department of Ob/Gyn Residents
2009-2010

Chiefs



Robbie Conatser
MUSC



Meghan Lynch
MUSC



Gretchen Reinhart
Univ. of Pittsburgh



Jona Rushing
Univ. of IA



Rebecca Wineland
Univ. of CT

PGY-3



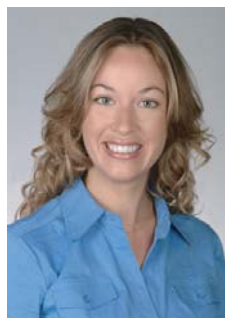
Hema Doshi
MUSC



Christopher Goodier
MUSC



Eleanor Murray
UAB



Heather Norton
Univ. of Miami



Edward Tarnawa
Univ. of TX

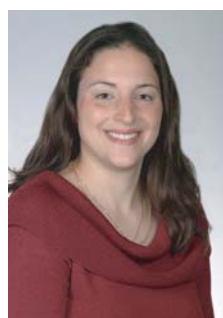
PGY-2



Caroline Billingsley
MUSC



Brad Campbell
MUSC



Leah Lamale-Smith
Univ. of IA



Jennifer Loehle
Univ. of Louisville



Erin Swanson
ECU

PGY-1



Angela Choi
MUSC



Jill Cierny
Tulane



Jonathan Foote
UVA



Katie Gurchak
Wayne State



Carlton Schwab
LSU